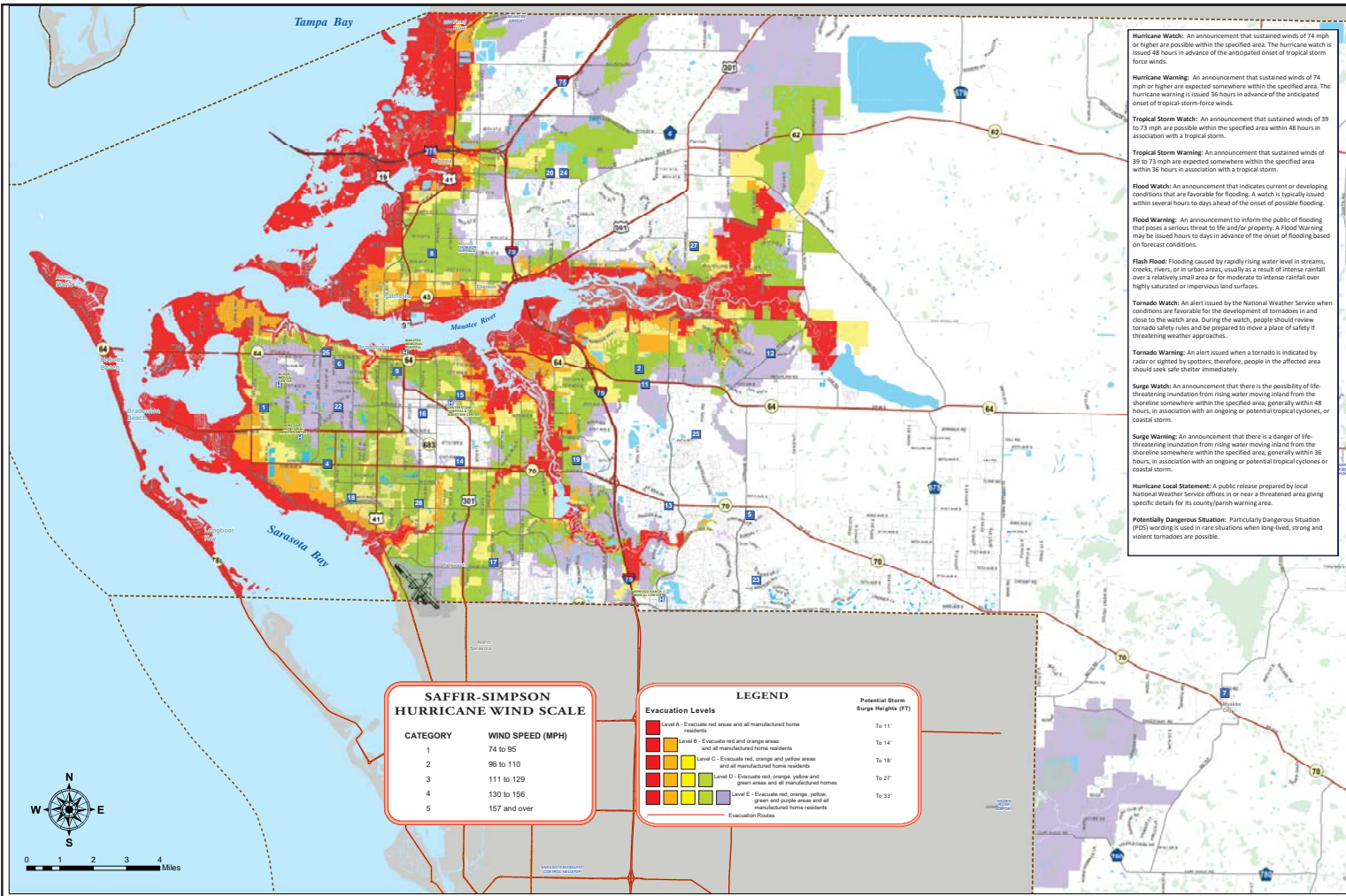


MANATEE COUNTY

EVACUATION LEVELS & SHELTERS



SHELTER INFORMATION - Refer to Map

NO.	SHELTER NAME	ADDRESS	DOG/CAT SHELTER
18	Bayshore Elementary School	6120 26th Street West, Bradenton	
13	Braden River Middle School	6215 River Club Blvd., Bradenton	
19	Braden River High	6545 SR. 70 East, Bradenton	🐕🐈
24	Buffalo Creek Middle School	7320 69th Street East, Palmetto	
28	Daughtry Elementary	515 63rd Ave East, Bradenton	
2	Freedom Elementary School	9515 State Road 64 East, Bradenton	
25	Gullett Elementary School	12125 44th Avenue East, Bradenton	
11	Halle Middle School	9501 State Road 64 East, Bradenton	
15	Johnson Middle School	2121 26th Avenue East, Bradenton	
17	Kinnan Elementary School	3415 Tallevast Road, Sarasota	
4	Lee Middle School	4000 53rd Avenue West, Bradenton	
6	Manatee High School	1000 32nd Street West, Bradenton	🐕🐈
5	McNeal Elementary School	6325 Lorraine Road, Bradenton	
26	Miller Elementary School	4201 Manatee Avenue West, Bradenton	
20	Millis Elementary School	7200 69th Street East, Palmetto	🐕🐈
7	Myakka City Elementary School	37205 Manatee Ave., Myakka City	
14	Oncoco Elementary School	5214 22nd Street Court East, Bradenton	
22	Prime Elementary School	3801 Southern Parkway, Bradenton	
9	Rodgers Garden Elementary	515 13th Ave West, Bradenton	
16	Rowlett Elementary School	3500 9th Street East, Bradenton	
1	Seabreeze Elementary School	3601 71st Street West, Bradenton	
8	Tillman Elementary School	1415 29th Street East, Palmetto	
27	Williams Elementary School	3404 Fort Hamer Road, Parrish	
23	Willis Elementary School	14705 The Masters Avenue, Bradenton	
12	Witt Elementary School	200 Rye Road, Bradenton	

IMPORTANT CONTACT INFORMATION

ANIMAL SERVICES	941-742-5933
EMERGENCY MANAGEMENT	941-749-3500
SPECIAL NEEDS REGISTRY	941-749-3500 ext. 7328
FLORIDA POWER AND LIGHT	800-468-8243
HIGHWAY PATROL	941-751-7647
PEACE RIVER ELECTRIC	800-282-3824
SHERIFF	941-747-3011
SOLID WASTE	941-792-8811
AMERICAN RED CROSS	941-792-8686
CATHOLIC CHARITIES	941-714-7829
SALVATION ARMY	941-748-5110
UNITED WAY	941-748-1313
211 REFERRAL LINE	2-1-1
MANATEE COUNTY GOVERNMENT	941-748-4501
NOAA WEATHER RADIO	FIPS code 012081
TDD	941-742-5802
WWW.MYMANATEE.ORG	
DO NOT CALL 9-1-1 FOR HURRICANE INFORMATION	

EMERGENCY ALERT STATIONS

TELEVISION
WTSP - Channel 10
WTVT - Channel 13
WFTS - Channel 28
WWSB - Channel 7
WVEA - Channel 62 (Spanish)
WFLA - Channel 8
BAY NEWS 9
RADIO
WFLA - 970 AM
WPWR - 1490 AM
WCTQ - 106.5 FM
WJIS - 88.1 FM

A PARENT'S GUIDE ON WHAT TO BRING TO A SHELTER FOR YOUR CHILDREN

- Please bring age appropriate items for your child
- ✓ Baby food jars - combination of vegetables, fruits, cereals and meats
 - ✓ Cereal (child age specific)
 - ✓ Favorite healthy snacks
 - ✓ Diaper/wipes
 - ✓ Diapers / pull-ups
 - ✓ Formula (powdered and/or ready-made)
 - ✓ Oral electrolyte solution, such as Pedialyte
 - ✓ Juice boxes
 - ✓ Baby bottles
 - ✓ Baby feeding spoons
 - ✓ Nipples for baby bottles
 - ✓ Disposable changing pads
 - ✓ Infant bathing basin, wash cloths and towels
 - ✓ Infant hat and booties
 - ✓ Lightweight blankets
 - ✓ Portable crib
 - ✓ Toddler potty seat
 - ✓ Small toys that don't make noise such as books, cards, puzzles, handheld games, extra batteries, and any special item that the child may be attached to that provides comfort.

USING YOUR COUNTY MAP

1. Locate where you live and work on the map.
2. Determine whether you are in an evacuation area, and if so, what level (color).
3. If you are in an evacuation area, or mobile home/RV, decide where you will go if ordered to evacuate. Your choices include:
 - ✓ Home of a relative or friend outside the evacuation zone
 - ✓ Motel/motel outside the evacuation zone (make arrangements early)
 - ✓ Go to a public shelter
 - ✓ As a last resort leave the area entirely
4. If you must go to a public shelter, use your county map to decide which one is closest. Make sure you verify the shelter is open before you go.

HURRICANE THREAT

- ✓ The colored areas on the map are vulnerable to storm surge. Storm surge is the saltwater flooding that rushes over coastal areas when the eye of a hurricane crosses land.
 - ✓ The colored areas on the map are vulnerable to storm surge. Storm surge is produced by water being pushed towards the shore by the force of the winds moving around the storm.
 - ✓ Hurricanes are categorized on a scale of 1 to 5, depending on wind strength and destructive power. The evacuation zones are color coded to designate the level of storm surge likely to occur.
 - ✓ If you live in an area ordered to evacuate, gather your family/pets and emergency supplies, secure your home and leave immediately. Failure to obey a mandatory evacuation order is a violation of state and local laws.
- Note: All persons living in mobile homes/RVs must evacuate for all mandatory evacuation orders, regardless of where you are located in the county.

Shelter openings vary with each emergency. Shelter openings will differ by size and intensity of a disaster. Stay tuned to local media for a listing of shelters, to include the pet-friendly shelters, which will be opened for an event. Do not go to the shelter until local officials announce through the media that the shelter is open.